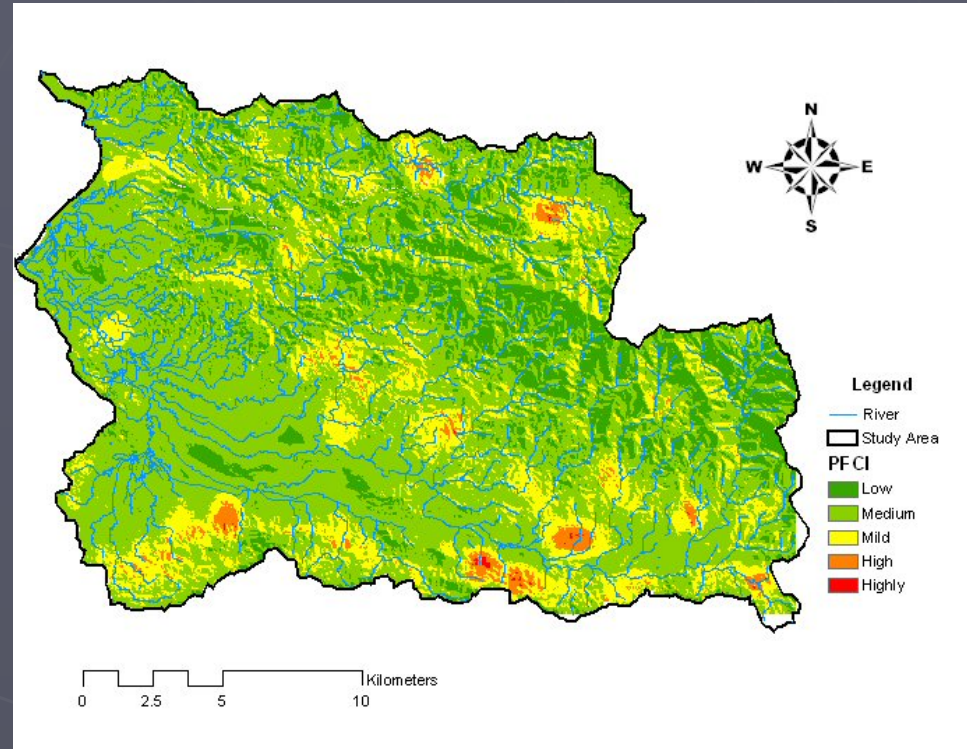


Research Program

- ▶ Development of TMDLs for the Río Grande de Añasco, Río Yagüez and Río Guanajibo Watersheds: Phase I – Problem Identification (PREQB).



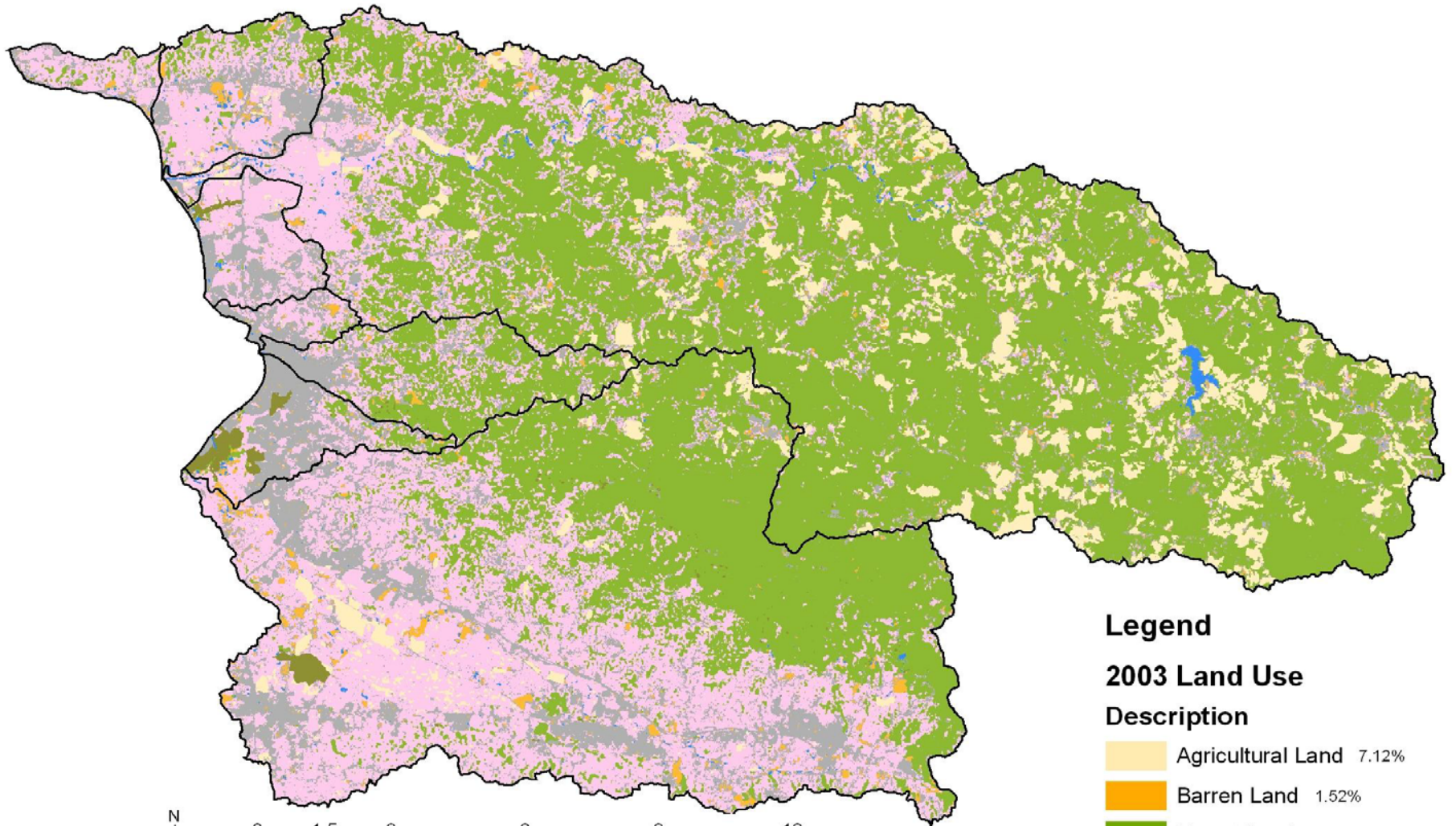
Potential Fecal Coliform
Contamination Index



Research Program

- ▶ Development of Land Use Maps for the Río Grande de Añasco, Río Yagüez, and Río Guanajibo Watersheds (PREQB).

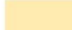










Legend

2003 Land Use

Description

| | | |
|---|-------------------|--------|
|  | Agricultural Land | 7.12% |
|  | Barren Land | 1.52% |
|  | Forest Land | 50.01% |
|  | Range Land | 27.64% |
|  | Urban or Built-Up | 12.71% |
|  | Water | 0.46% |
|  | Wetland | 0.55% |

2003 Land Use Classification for Mayagüez Bay Basin:
Río Grande de Añasco, Río Guanajibo and Río Yagüez Watershed

Research Program

- ▶ Microbial Sources Tracking to Determine the Host Origin of Fecal Contamination in Two Puerto Rico Watersheds (PRWRERI)
- ▶ Sediment transport studies in Río Grande de Añasco, Río Yagüez, and Río Guanajibo (ERDC, US ARMY CoE)

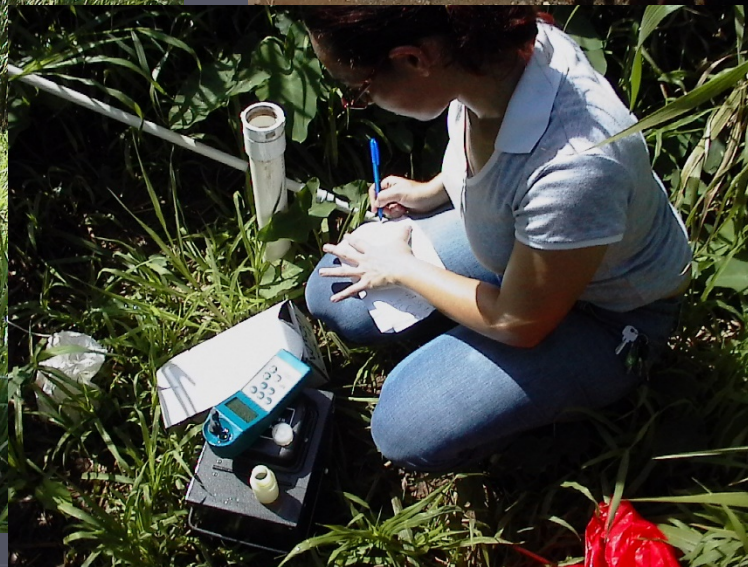


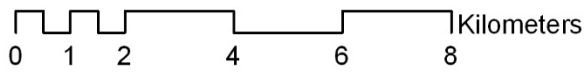
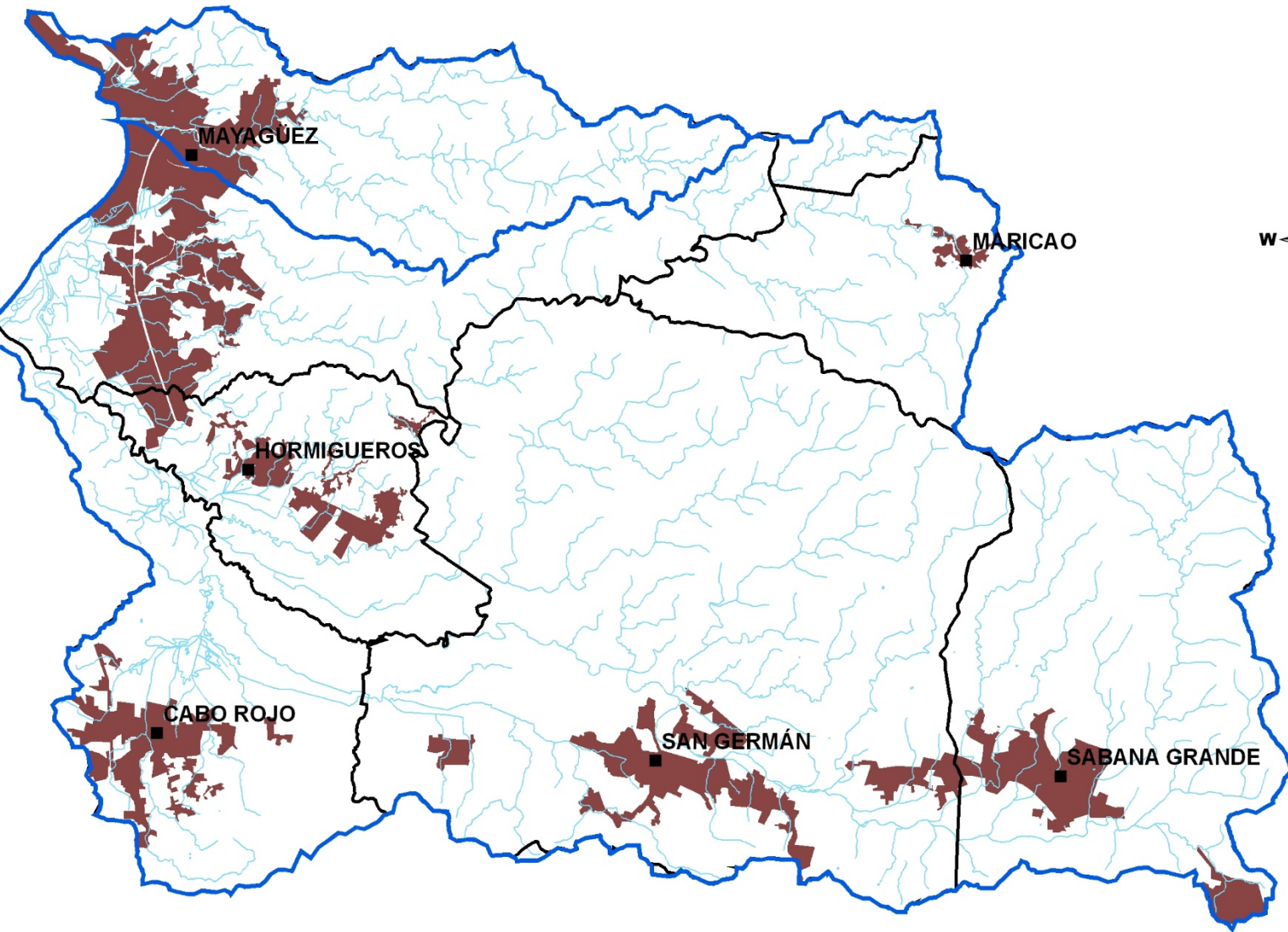




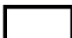



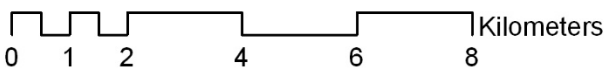
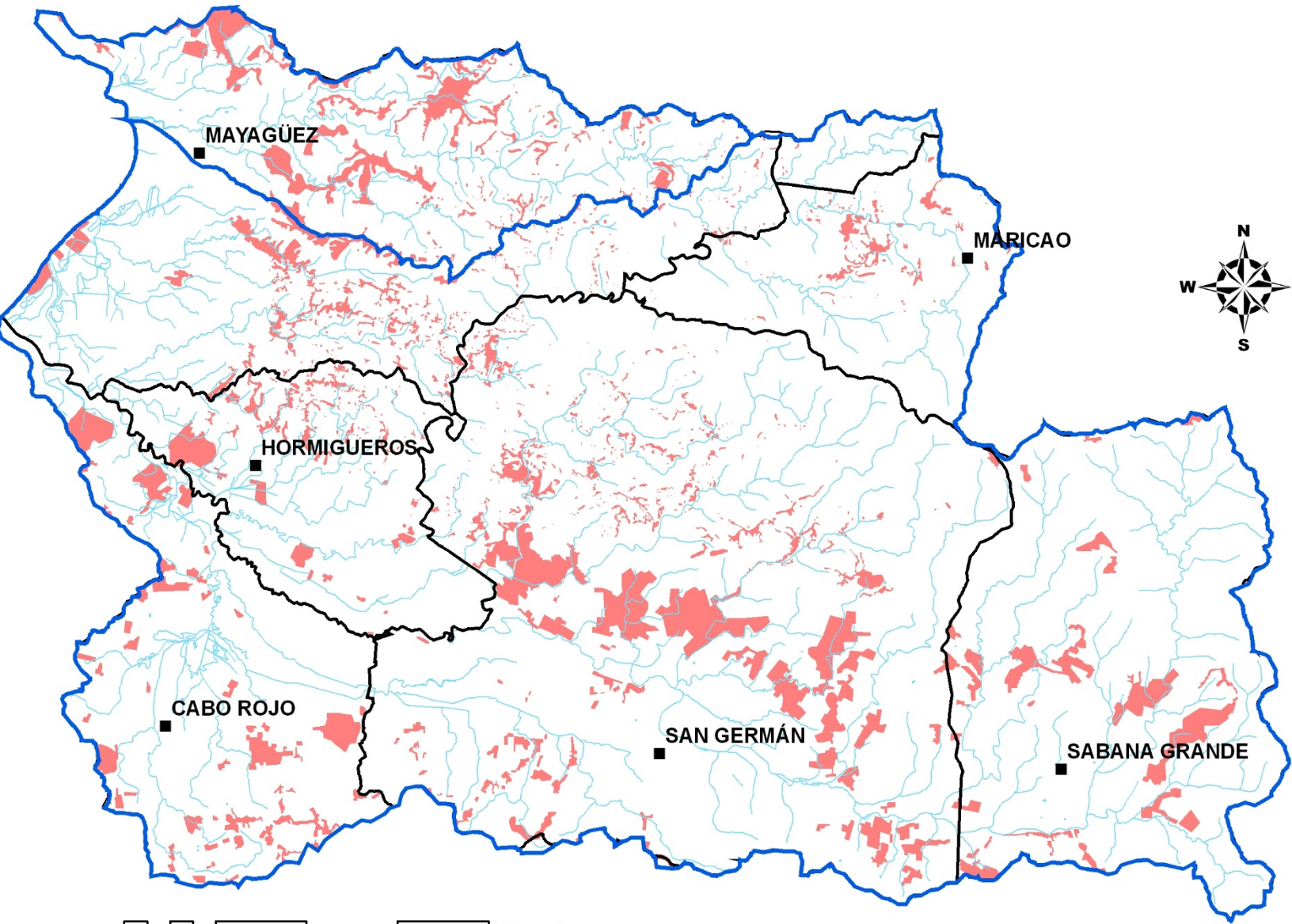
Research Program

- ▶ Rural communities septic tank survey in Río Grande de Añasco Watershed (UPRM)





- Legend**
-  Sanitary sewer serviced ar
 -  Basin Area
 -  Municipalities
 -  Rivers



Legend

- SepticTankArea
- Basin Area
- Municipalities
- Rivers

Research Program

- ▶ Innovative Onsite Wastewater Disposal Systems Outreach and Demonstration Project (DNER)
- ▶ LEAPE – Education program for coastal zone non-point pollution sources identification (DNER)
- ▶ Operational hydraulic computer model for water distribution system in west PR (PRASA)



